

MONTHLY MEMBERSHIP PROGRESS REPORT

LOCATION INDIA

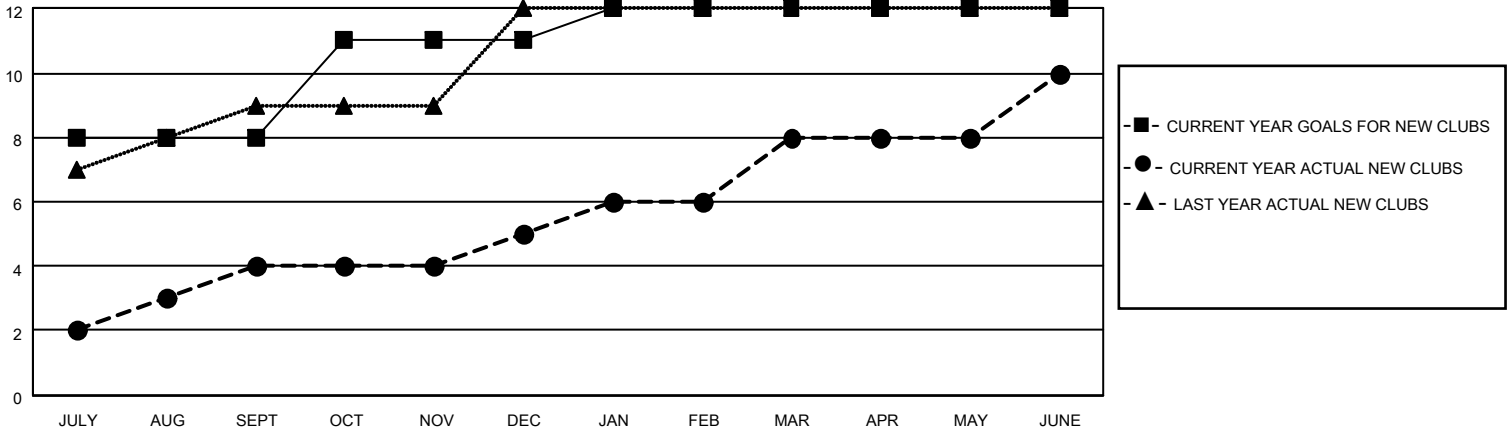
District 322 G

Results as of: 6/30/2023

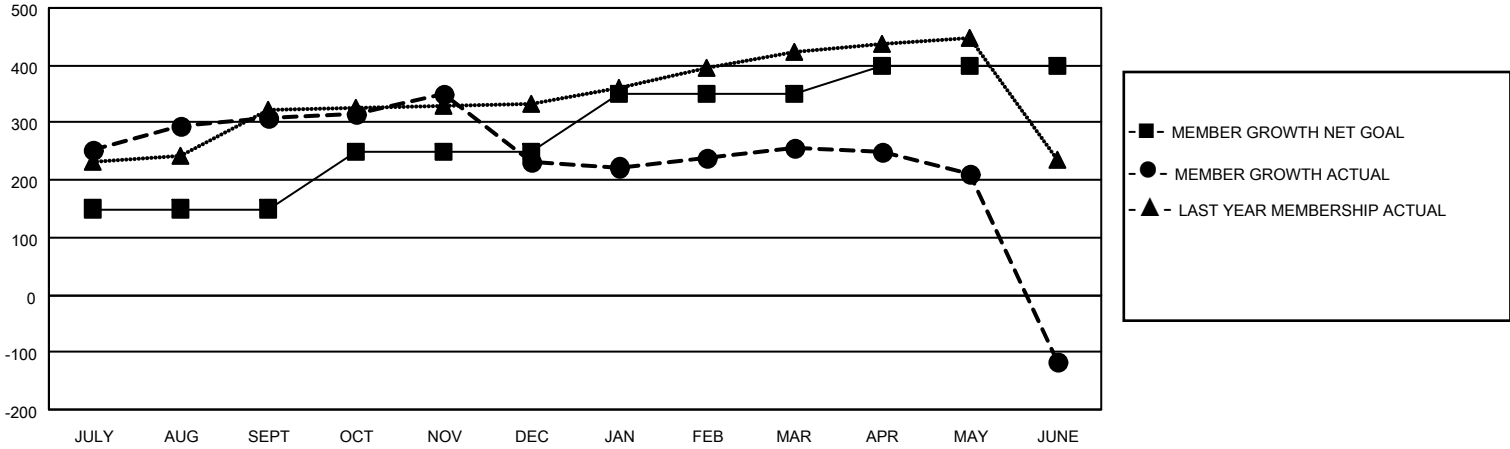
Clubs			
RESULTS FOR 2022-2023			
QUARTER	NEW CLUB GOAL	NEW CLUBS	DROPPED CLUBS
JULY/AUG/SEPT	8	4	3
OCT/NOV/DEC	3	1	5
JAN/FEB/MAR	1	3	3
APR/MAY/JUNE	0	2	1

Members			
RESULTS FOR 2022-2023			
QUARTER	MEMBER GROWTH NET GOAL	MEMBER GROWTH ACTUAL	DROPPED MEMBERS ACTUAL (including transfers)
JULY/AUG/SEPT	150	476	137
OCT/NOV/DEC	100	172	231
JAN/FEB/MAR	100	123	99
APR/MAY/JUNE	50	127	468

GOALS AND ACTUAL NEW CLUBS CUMULATIVE



GOALS AND ACTUAL MEMBERS CUMULATIVE



DROPPED CLUBS: 12

67 CLUBS OF 97 ADDED 1 OR MORE NEW MEMBERS

GENDER DISTRIBUTION

MALE	2,163 (61.15%)
FEMALE	1,373 (38.82%)
NON BINARY	0 (0.00%)
PREFER NOT TO ANSWER	1 (0.03%)

DROPPED MEMBERS

[CLICK HERE FOR CUMULATIVE MEMBERSHIP DATA](#)

DECEASED	15
CLUB CANCELLED	156
OTHER	764
TOTAL	935

TOTAL FAMILY UNIT MEMBERS 1,733

FAMILY MEMBERS PAYING HALF DUES 956